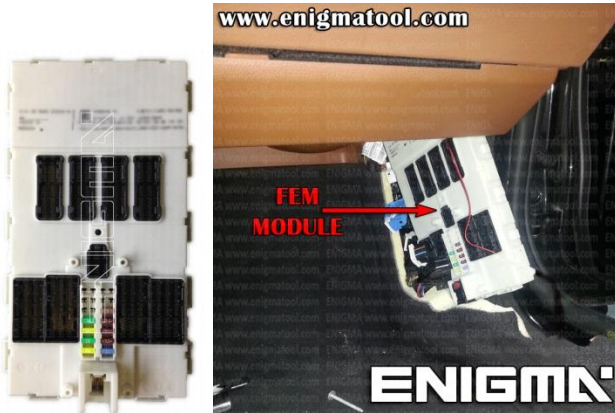


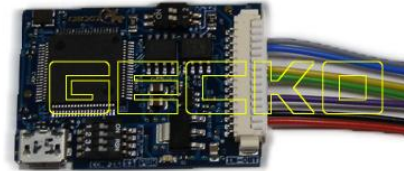
BMW F SERIES FEM MODULE GECKO FILTER INSTALLATION

FEM MODULE PHOTO:



REQUIRED:

GECKO CAN MODULE



FOLLOW THIS INSTRUCTION STEP BY STEP:

1. **! DISCONNECT BATTERY !** before you remove the FEM MODULE from the car.
2. Look at PHOTO1 and **REMOVE INDICATED COMPONENT CAREFULLY.**
Solder cables according to colors to the points on board as shown on PHOTO1.
! SAVE THE REMOVED COMPONENT UNTIL YOUR JOB IS COMPLETED !
3. Solder cable according to color to the point on board as shown on PHOTO2.
4. Set GECKO buttons as shown on PHOTO3.
5. Make sure that the connection you made is safe and secure.
6. Use silicone to mount GECKO FILTER on FEM's board.

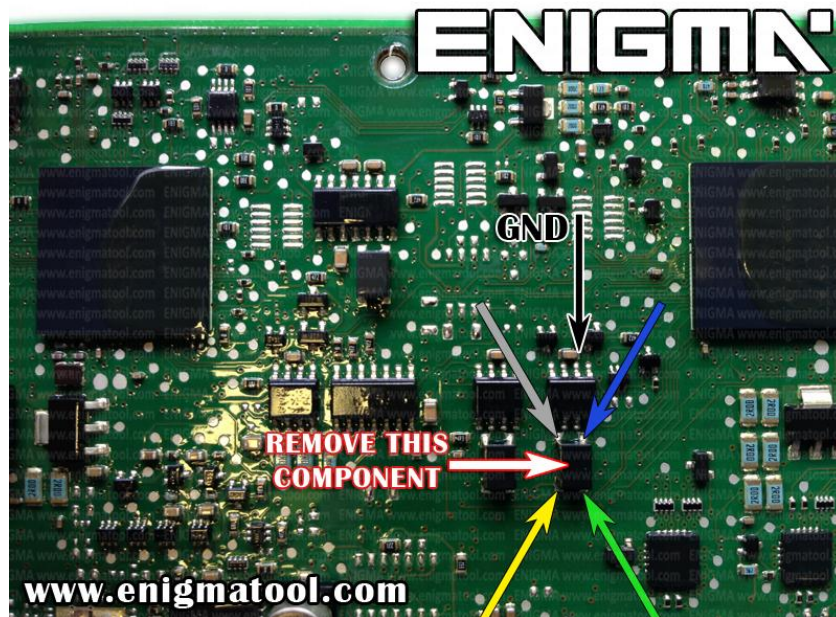


PHOTO 1: Solder cables according to the colors like shown on the photo above.

FOR MORE INFORMATION

Call **0034 983 359 787** or visit www.enigmatool.com

DIAGCARELECTRONICS S.L. Ebanistería 1A, 47610 Zaratán, Spain

BMW F SERIES FEM MODULE GECKO FILTER INSTALLATION

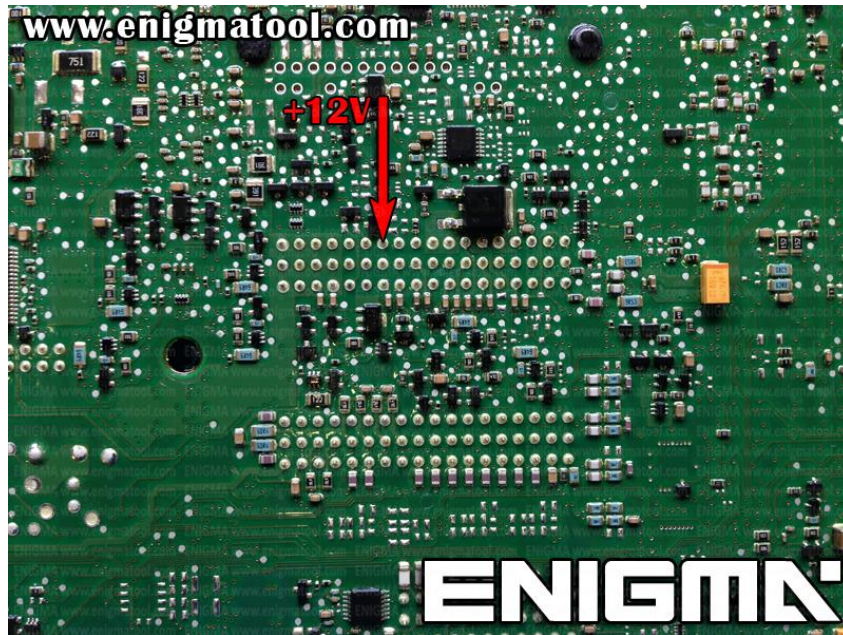


PHOTO 2: Solder cable according to the color like shown on the photo above.

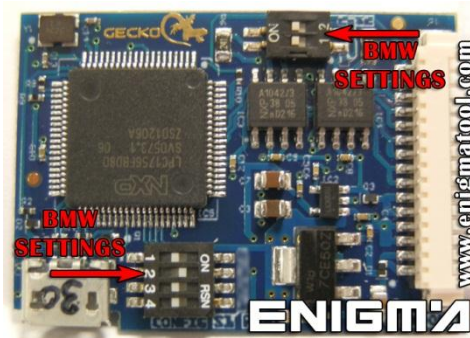


PHOTO 3: Set the filter buttons like shown on the photo above.

LEGAL DISCLAIMER:

DIAGCAR ELECTRONICS S.L. does not take any legal responsibility of illegal use of any information stored in this document. Copying, distributing or taking any action in reliance with the content of this information is strictly prohibited.

FOR MORE INFORMATION

Call **0034 983 359 787** or visit www.enigmatool.com

DIAGCARELECTRONICS S.L. Ebanistería 1A, 47610 Zaratán, Spain