

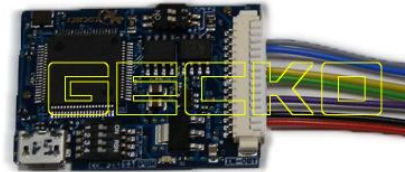
ENIGMA USER MANUAL

DACIA LODGY GECKO FILTER INSTALLATION

DASH PHOTO:



REQUIRED: GECKO CAN MODULE



FOLLOW THIS INSTRUCTION STEP BY STEP:

1. Remove the DASH from the car and open it to get to board.
2. **SCRATCH THE PCB TO CUT THE PATHS** (PHOTO3) and solder cables according to colors to the points on board as shown on PHOTO1.
3. Set GECKO buttons as shown on PHOTO2.
4. Make sure that the connection you made is safe and secure.
5. Use silicone to mount GECKO FILTER inside dash.

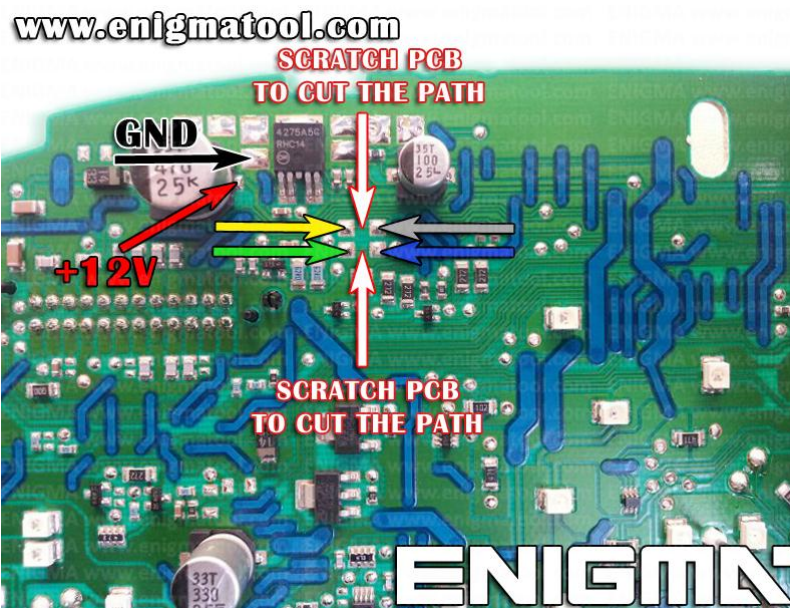


PHOTO 1: Solder cables according to the colors like shown on the photo above.

FOR MORE INFORMATION

Call **0034 983 359 787** or visit www.enigmatool.com

DIAGCARELECTRONICS S.L. Ebanistería 1A, 47610 Zaratán, Spain


Diagcar S.L.

ENIGMA USER MANUAL

DACIA LODGY GECKO FILTER INSTALLATION

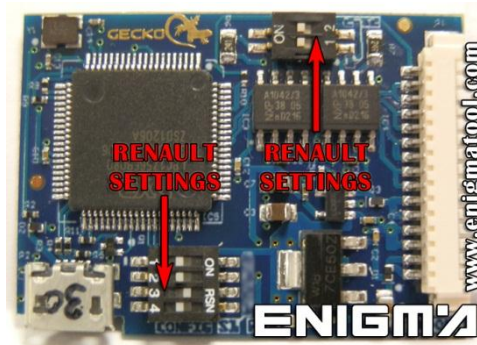


PHOTO 2: Set GECKO buttons like shown on the photo above.

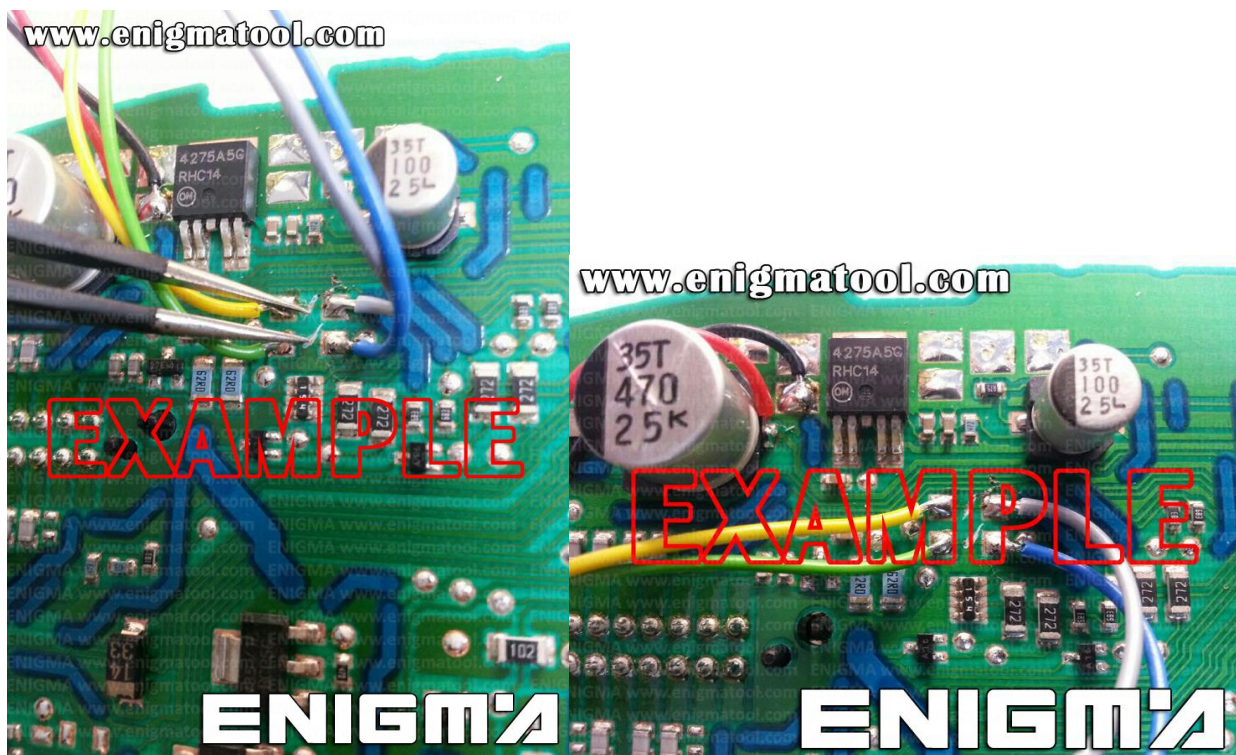


PHOTO 3: See example pictures to know how to cut paths on pcb.

LEGAL DISCLAIMER:

DIAGCAR ELECTRONICS S.L. does not take any legal responsibility of illegal use of any information stored in this document. Copying, distributing or taking any action in reliance with the content of this information is strictly prohibited.

FOR MORE INFORMATION

Call **0034 983 359 787** or visit www.enigmatool.com

DIAGCARELECTRONICS S.L. Ebanistería 1A, 47610 Zaratán, Spain

Diagcar Electronics S.L.