

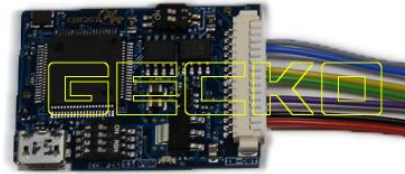
MERCEDES A - W176 DASH GECKO FILTER INSTALLATION

DASH PICTURE:



REQUIRED:

GECKO CAN MODULE



FOLLOW THIS INSTRUCTION STEP BY STEP:

1. Remove the DASH from the car and open it **VERY CAREFULLY!**
2. First **REMOVE COMPONENT CAREFULLY** and solder cables according to colors to the points on board as shown on PHOTO1.
! SAVE THE REMOVED COMPONENT UNTIL YOUR JOB IS COMPLETED !
3. Set GECKO FILTER buttons as shown on PHOTO2.
4. Make sure that the connection you made is safe and secure.
5. Use silicone to mount GECKO FILTER inside the DASH.

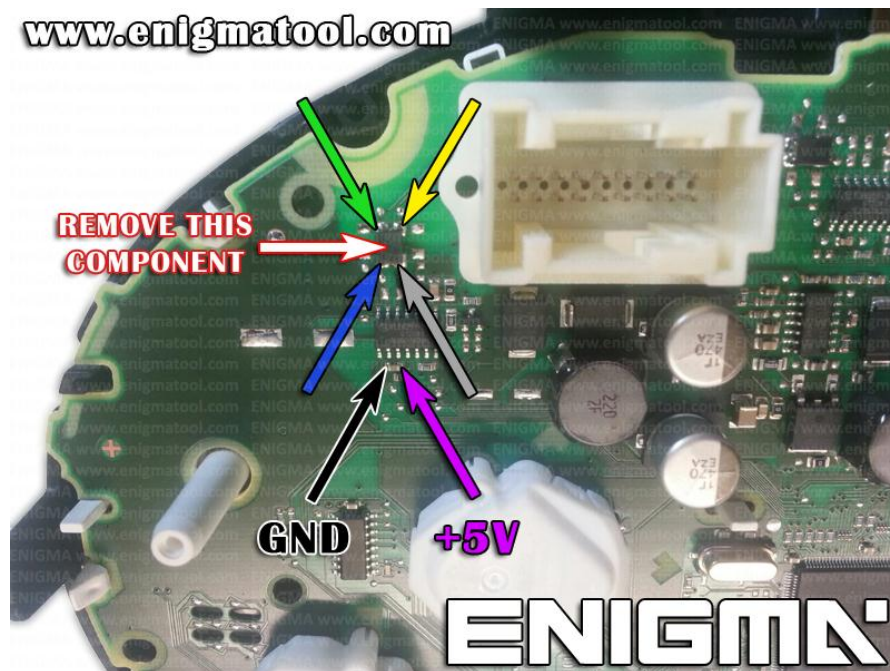


PHOTO 1: Solder cables according to the colors like shown on the photo above.

FOR MORE INFORMATION

Call **0034 983 359 787** or visit www.enigmatool.com

DIAGCARELECTRONICS S.L. Ebanistería 1A, 47610 Zaratán, Spain

MERCEDES A - W176 DASH GECKO FILTER INSTALLATION

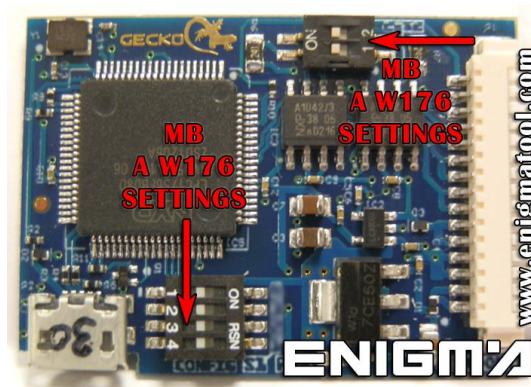


PHOTO 2: Set GECKO FILTER buttons as shown on picture above.

LEGAL DISCLAIMER:

DIAGCAR ELECTRONICS S.L. does not take any legal responsibility of illegal use of any information stored in this document. Copying, distributing or taking any action in reliance with the content of this information is strictly prohibited.

FOR MORE INFORMATION

Call **0034 983 359 787** or visit www.enigmatool.com

DIAGCAR ELECTRONICS S.L. Ebanistería 1A, 47610 Zaratán, Spain