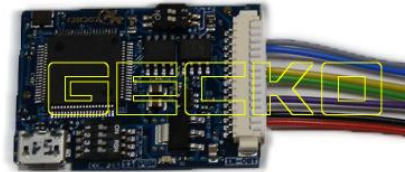


# RENAULT FLUENCE 2013 GECKO FILTER INSTALLATION

## DASH PHOTO:

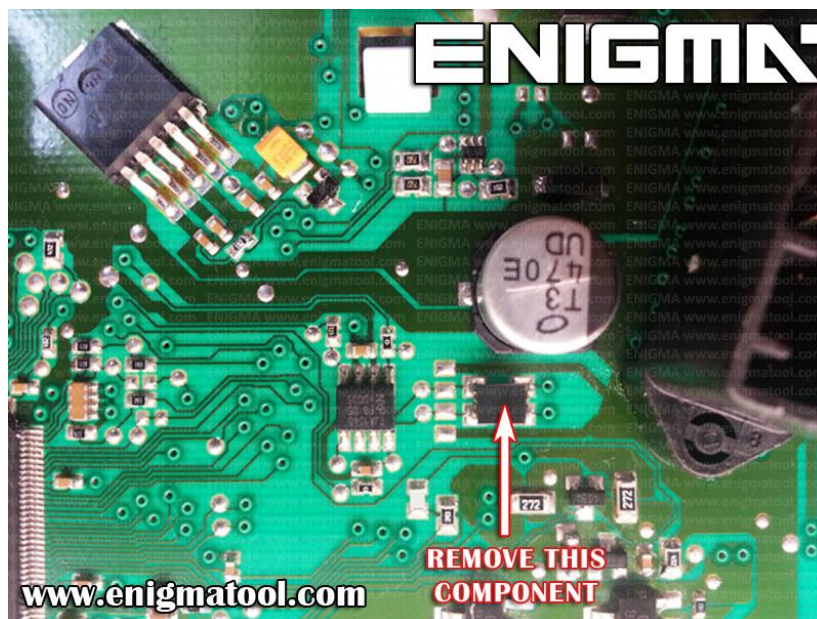


## REQUIRED: GECKO CAN MODULE



## FOLLOW THIS INSTRUCTION STEP BY STEP:

1. Remove the DASH from the car and open it.
2. Get to board like on PHOTO1 and REMOVE THE COMPONENT CAREFULLY!  
**! SAVE THE REMOVED COMPONENT UNTIL YOUR JOB IS COMPLETED !**
3. Solder cables according to colors to the points on board as shown on PHOTO2.
4. Set GECKO buttons as shown on PHOTO3.
5. Use silicone to mount GECKO inside dash.



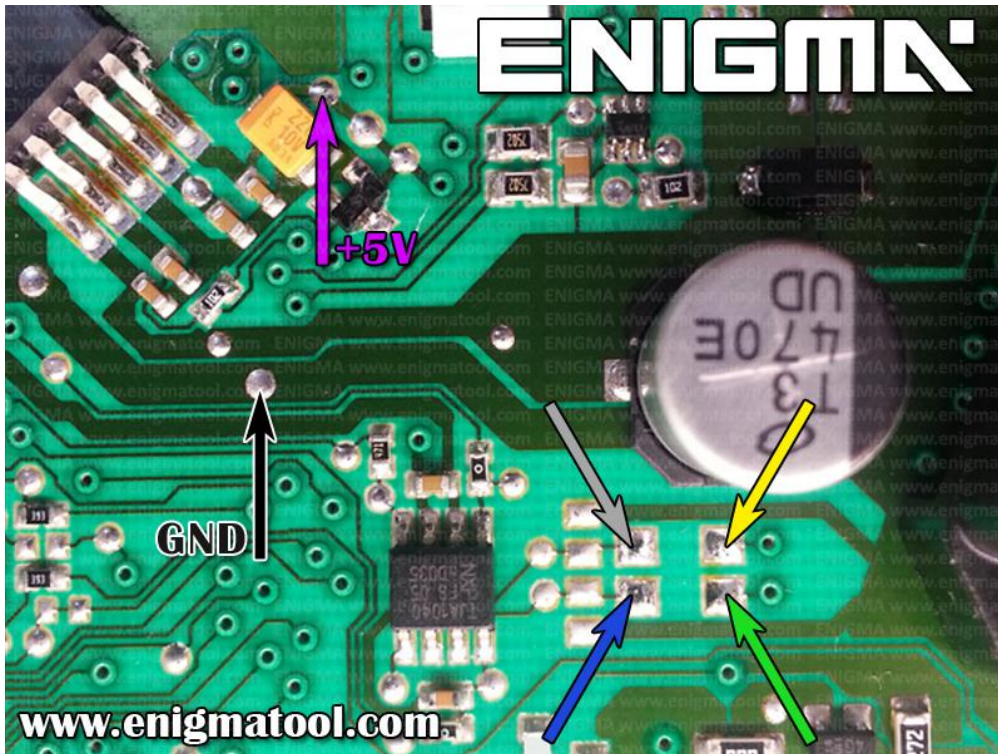
**PHOTO 1:** Disassemble the dash to get to the component shown on the photo above.

FOR MORE INFORMATION

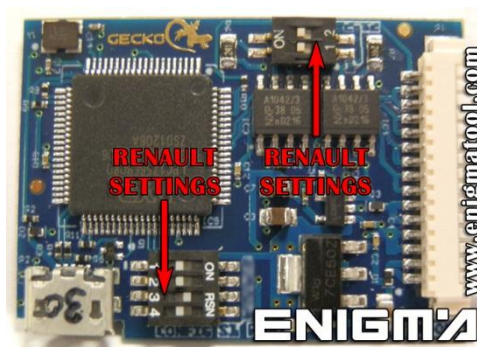
Call **0034 983 359 787** or visit [www.enigmatool.com](http://www.enigmatool.com)

DIAGCARELECTRONICS S.L. Ebanistería 1A, 47610 Zaratán, Spain

# RENAULT FLUENCE 2013 GECKO FILTER INSTALLATION



**PHOTO 2:** Solder cables according to the colors like shown on the photo above.



**PHOTO 3:** Set GECKO buttons like shown on the photo above.

## LEGAL DISCLAIMER:

**DIAGCAR ELECTRONICS S.L. does not take any legal responsibility of illegal use of any information stored in this document. Copying, distributing or taking any action in reliance with the content of this information is strictly prohibited.**

FOR MORE INFORMATION

Call **0034 983 359 787** or visit [www.enigmatool.com](http://www.enigmatool.com)

DIAGCARELECTRONICS S.L. Ebanistería 1A, 47610 Zaratán, Spain