

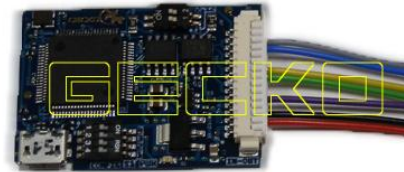
ENIGMA USER MANUAL

RENAULT FLUENCE GECKO FILTER INSTALLATION

DASH PHOTO:



REQUIRED: GECKO CAN MODULE



FOLLOW THIS INSTRUCTION STEP BY STEP:

1. Remove the DASH from the car and open it to get to board like on PHOTO1.
TAKE SPECIAL CARE WITH LCD CONNECTOR!
2. **REMOVE THE COMPONENT CAREFULLY** and solder cables according to colors to the points on board as shown on PHOTO2.
! SAVE THE REMOVED COMPONENT UNTIL YOUR JOB IS COMPLETED !
3. Set GECKO buttons as shown on PHOTO3.
4. Use silicone to mount GECKO inside dash.



ENIGMA

PHOTO 1: Disassemble the dash like shown on the photo above.

FOR MORE INFORMATION

Call **0034 983 359 787** or visit www.enigmatool.com

DIAGCARELECTRONICS S.L. Ebanistería 1A, 47610 Zaratán, Spain


Diagcar Electronics S.L.

ENIGMA USER MANUAL

RENAULT FLUENCE GECKO FILTER INSTALLATION

VERSION 1

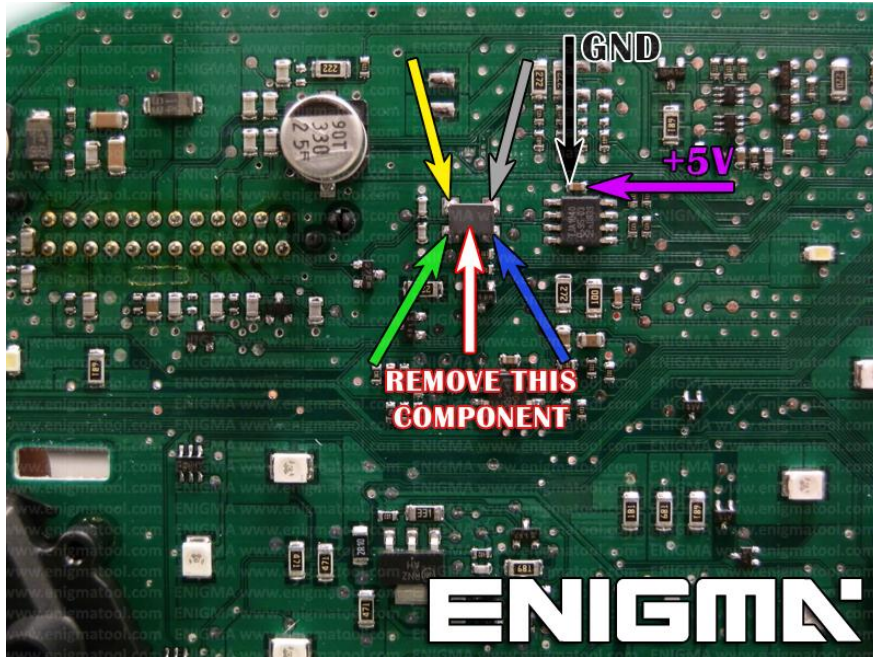


PHOTO 2: Remove component and solder cables according to the colors like shown on the photo above.

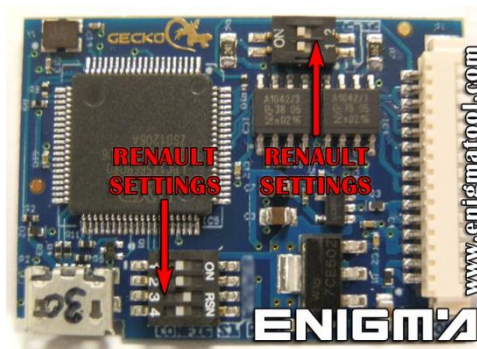


PHOTO 3: Set GECKO buttons like shown on the photo above.

FOR MORE INFORMATION

Call **0034 983 359 787** or visit www.enigmatool.com

DIAGCARELECTRONICS S.L. Ebanistería 1A, 47610 Zaratán, Spain

ENIGMA USER MANUAL

RENAULT FLUENCE GECKO FILTER INSTALLATION

VERSION 2



PHOTO 1: Remove component and solder cables according to the colors like shown on the photo above.

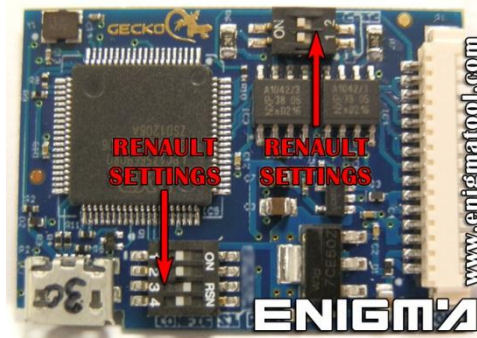


PHOTO 2: Set GECKO buttons like shown on the photo above.

LEGAL DISCLAIMER:

DIAGCAR ELECTRONICS S.L. does not take any legal responsibility of illegal use of any information stored in this document. Copying, distributing or taking any action in reliance with the content of this information is strictly prohibited.

FOR MORE INFORMATION

Call **0034 983 359 787** or visit www.enigmatool.com

DIAGCARELECTRONICS S.L. Ebanistería 1A, 47610 Zaratán, Spain