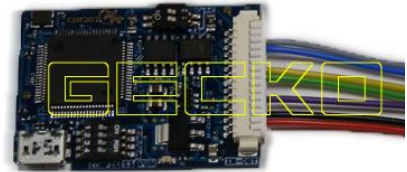


# RENAULT SCENIC III 2010 GECKO FILTER INSTALLATION

## DASH PHOTO:

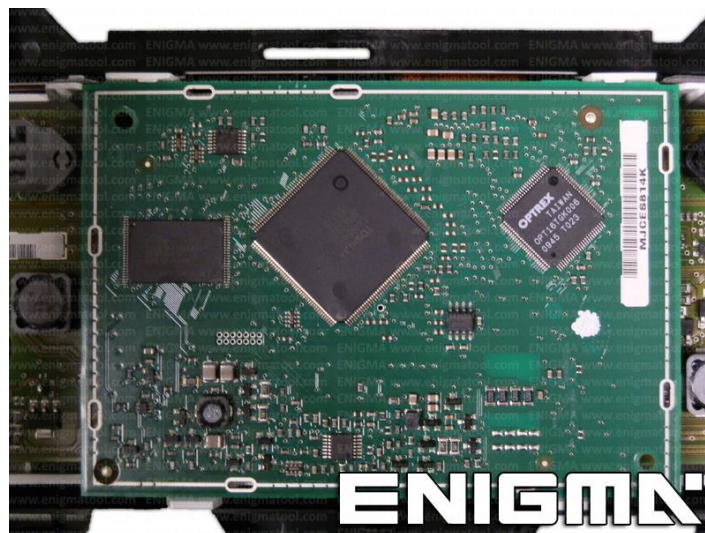


## REQUIRED: GECKO CAN MODULE



## FOLLOW THIS INSTRUCTION STEP BY STEP:

1. Remove the DASH from the car and open it to get to board like on PHOTO1.
2. Disassemble the board to get to other side.
3. **REMOVE THE COMPONENT CAREFULLY** and solder GECKO cables according to colors to the points on board as shown on PHOTO2.  
**! SAVE THE REMOVED COMPONENT UNTIL YOUR JOB IS COMPLETED !**
4. Set GECKO buttons as shown on PHOTO3.
5. Make sure that the connection you made is safe and secure.
6. Use silicone to mount GECKO inside dashboard.



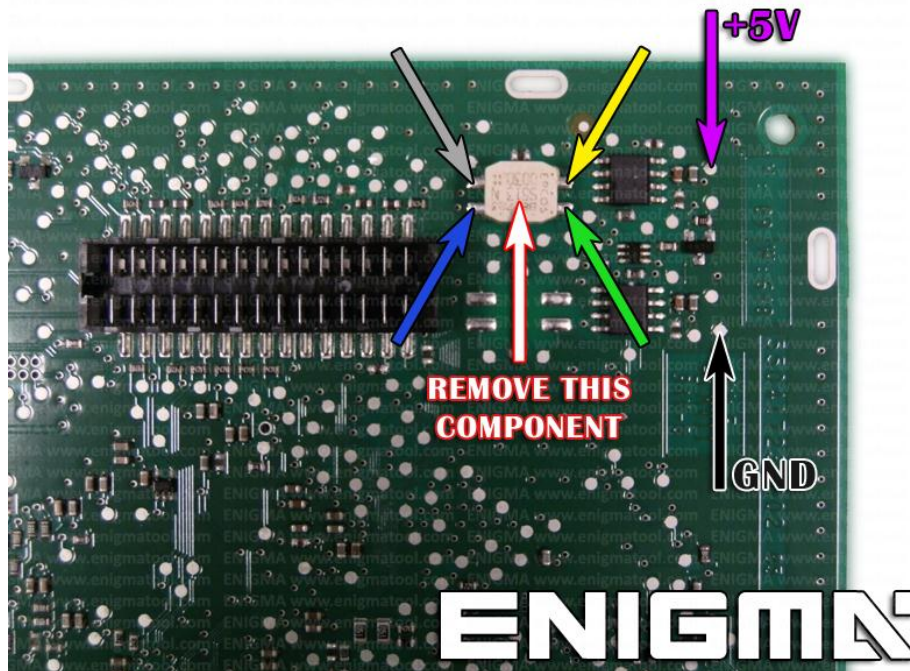
**PHOTO 1:** Disassemble the dash like shown on the photo above.

FOR MORE INFORMATION

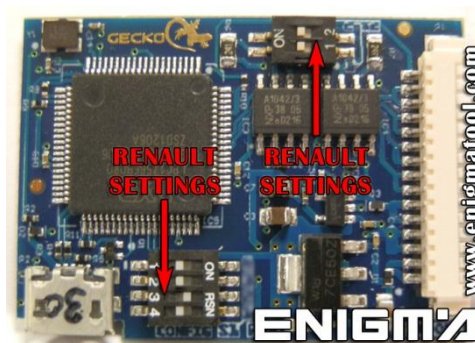
Call **0034 983 359 787** or visit [www.enigmatool.com](http://www.enigmatool.com)

DIAGCARELECTRONICS S.L. Ebanistería 1A, 47610 Zaratán, Spain

# RENAULT SCENIC III 2010 GECKO FILTER INSTALLATION



**PHOTO 2:** Remove component and solder cables according to the colors like shown on the photo above.



**PHOTO 3:** Set GECKO buttons like shown on the photo above.

## LEGAL DISCLAIMER:

**DIAGCAR ELECTRONICS S.L. does not take any legal responsibility of illegal use of any information stored in this document. Copying, distributing or taking any action in reliance with the content of this information is strictly prohibited.**

FOR MORE INFORMATION

Call **0034 983 359 787** or visit [www.enigmatool.com](http://www.enigmatool.com)

DIAGCARELECTRONICS S.L. Ebanistería 1A, 47610 Zaratán, Spain